



GLOBE STEELS PRIVATE LIMITED

CHENNAI, INDIA

WWW.GLOBE-INDIA.COM

Snapshot

- Promoters have over 45 years of experience in the industry.
- Origins are traced as a trading firm in steel.
- Manufacturing facilities established in 1990.
- Second factory commissioned in the third year of inception.
- Forward integration to CNC machined components in 1996.
- Over the next 12 years, five more facilities commissioned in Machining division.
- Major expansion into bright steel bars automated lines in 2012.
- Second forward integration into heat treatment of components in 2013.
- Further automated bright steel bars lines commissioned in 2021 at a new facility.
- Long products heat treatment lines commissioned in 2022.

Our Products

- Cold Drawn Steel Bars
- Centerless Peeled and Ground Bars
- Hardened and Tempered Peeled and Ground Bars
- Annealed/Normalised Cold Drawn Bars
- Annealed/Normalised Centerless Peeled and Ground Bars
- Hot Rolled Steel Bars
- Hot Rolled and Annealed/Normalised Steel Bars
- Hot Rolled Wire Rods
- Hot Rolled and Forged Steel Bars
- Spherodised Annealed, Pickle-Phosphated Drawn Coils

Infrastructure

- ISO 9001:2015 Certified facilities.
- Spread across three locations.
- Total Shopfloor area over 90,000 Sq. ft.
- Fully covered shop floor with EOT Overhead Cranes
- Total Power subscribed to is over 1500 HP
- Electronic Weigh Bridges
- Automated Production Lines
- Automated Finishing Lines
- Automated Inspection Lines

Our Facilities – Inspection

- Full-fledged Laboratory for incoming inspection.
- SPECTROMAXx Chemical Analyser.
- Universal Testing Machine.
- Brinell Hardness Tester.
- Rockwell Hardness Tester.
- Full complement of measuring and testing devices to ensure QC and QA.

Our Facilities - Production

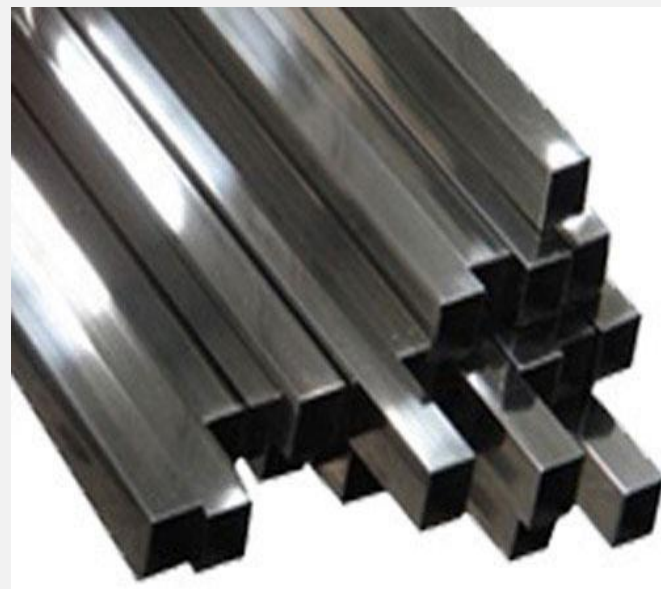
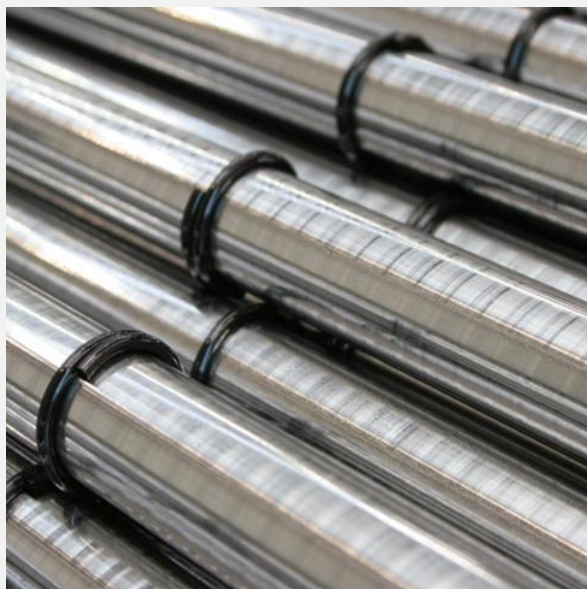
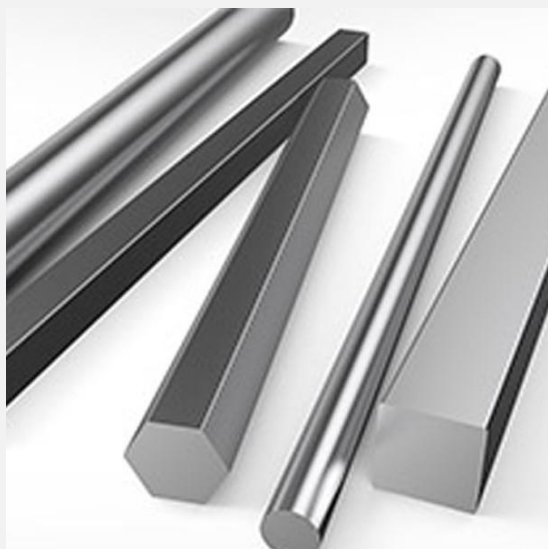
- Cold Draw Benches
- Combined Drawing Line
- Bar Peeling Machines
- Bar Straightening Machines
- Bar Reeling & Polishing Machines
- Shot Blasting Machines
- Centerless Grinding Machines
- Coil to Coil Drawing Bull Blocks
- Coil Straightening and Cutting Machines
- Circular Saw Cutting Machines

Our Facilities – Finishing and Testing

- Bar Polishing Machines
- Bar Chamfering Machines
- Full length surface tables to check bar straightness at each critical stage.
- Surface Roughness testers.
- Magnetic Particle Inspection – for shafts and bars
- Eddy Current Testing – for shafts
- Institut Dr. Foerster GMBH Circograph Eddy Current Testing for bars
- Hitachi XMET Spectrum Alloy Analysers.

Our Product Range

- Cold Drawn Steel Bars
 - Rounds – 6.00 mm to 75.00 mm
 - Hexagons – 8.00 mm to 40.00 mm
 - Squares – 10.00 mm to 38.00 mm
- Centerless Peeled and Ground Bars
 - 12.00 mm to 75.00 mm dia
- Centerless Ground Bars
 - 6.00 mm to 75.00 mm
- Hot Rolled Bars and Coils
 - Wire Rods : 5.50 mm to 32.00 mm
 - Bars : 16.00 mm to 160.00 mm
 - Forged Rounds : 160.00 mm to 400.00 mm



Steel Classifications

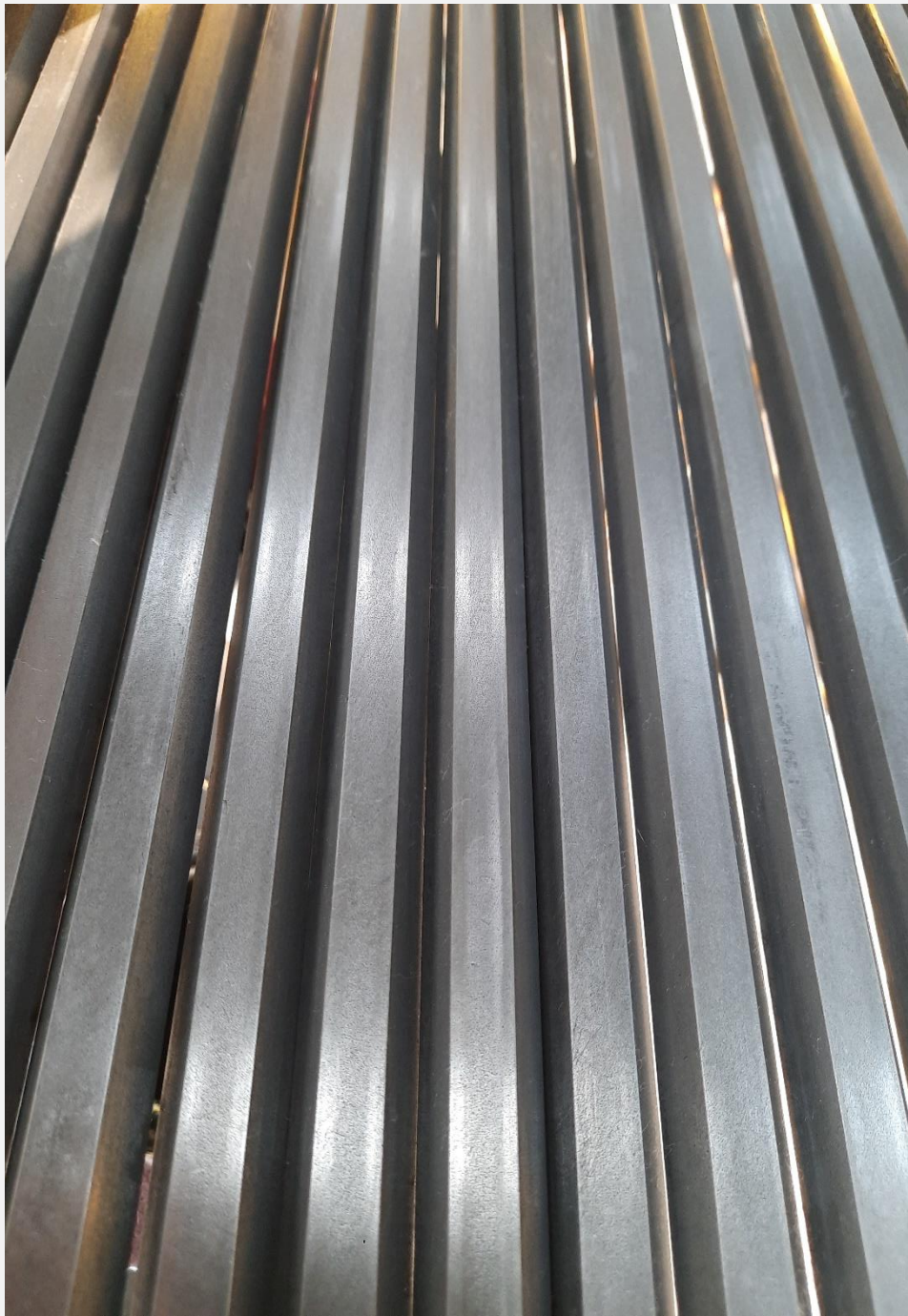
- Low, Medium & High Carbon Steels
- Free Cutting Steels
- Low & Medium Alloy Steels
- Ball Bearing Steels
- Spring Steels
- Stainless Steels

Steel Standards

- American (AISI & SAE)
- British (EN Series)
- German (DIN)
- Japanese (JIS)
- French (AFNOR)
- Russian (GOST)

List of Customers

- Lucas TVS & their Vendors.
- Brakes India & their Vendors.
- Sundaram Fasteners, Padi, Pondicherry & SEZ, Chengalpettu.
- Rane (Madras) Ltd., Chennai, Mysore, Pondicherry, Uttarakhand, & Kancheepuram.
- Rane TRW Steering Systems, Guduvancherry, Viralimalai.
- Royal Enfield Motors,
- Madras Engineering Industries (P) Ltd., Chennai.
- Delphi - TVS Diesel System Ltd., Sriperumbudur.
- Export Customers in Europe, South America and South-East Asia.



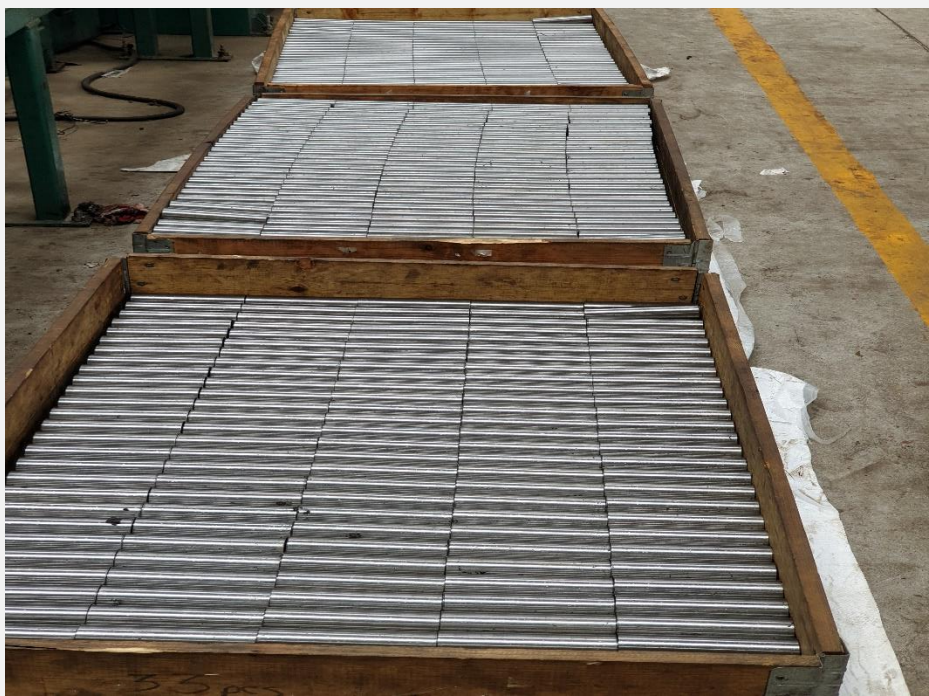






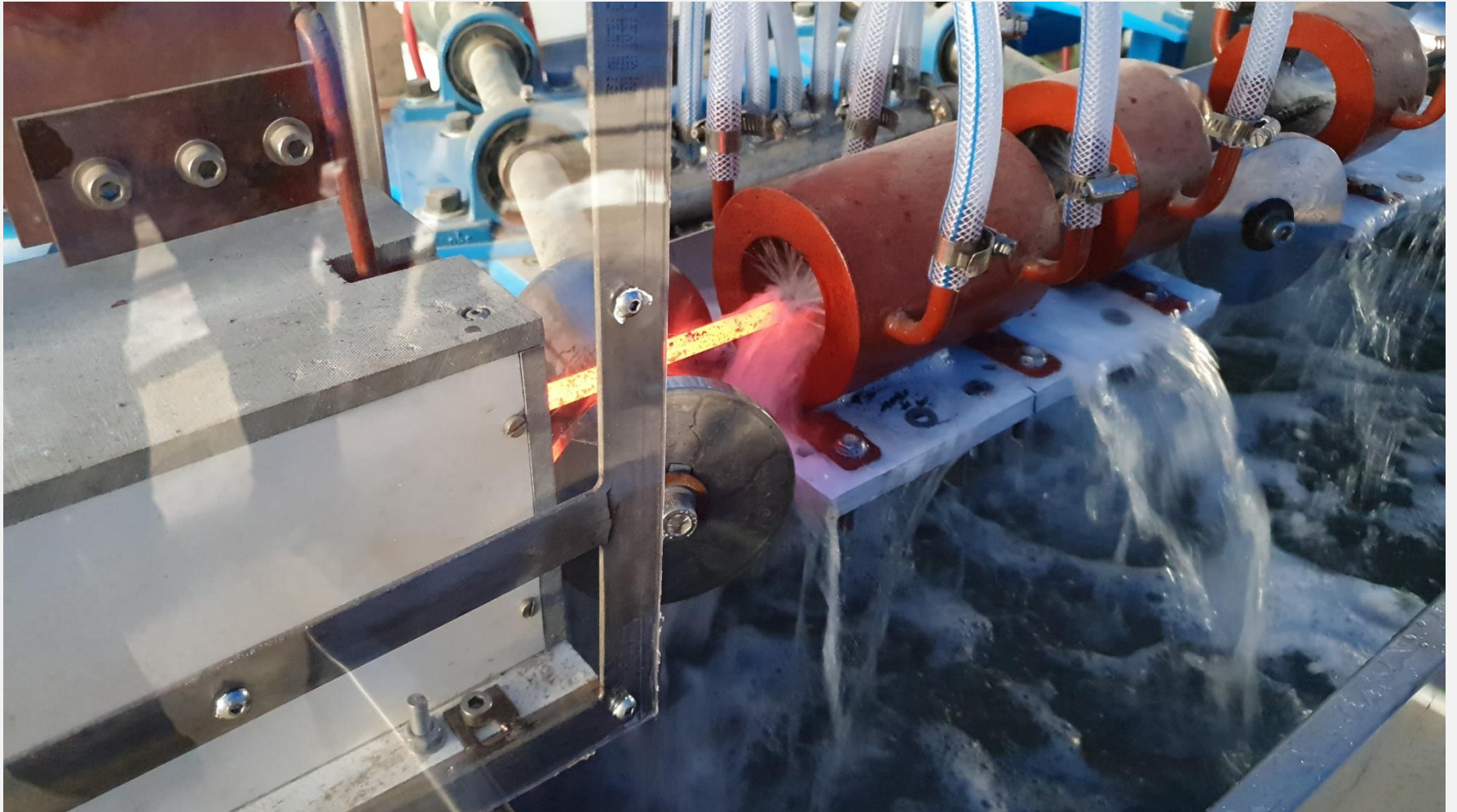








Induction Hardening and Tempering Lines for Long Products



Induction Hardening and Tempering Lines for Long Products



Induction Hardening and Tempering Lines for Long Products



Induction Hardening and Tempering Lines for Long Products



CONTACT US

Corporate Office

C-5, Industrial Estate, Ambattur, Chennai-58

Tel:- +91 44 2625 7561, +91 44 2623 1026

Email: globesteels@globe-india.com

Website : www.globegroup.in

Contact Persons:

R. Sridhar - Director :- +91 99625 38456

Govind Modi – Associate Director:- +91 98840 00261

Rahul Modi - Associate Director :- +91 99403 46562